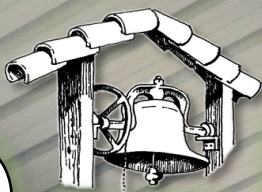




Niles Discovery Church

JULY
Volume 26 Number 07



THE BELL



Church Pic Nic 2019 — Picture By Priscilla Taylor

UPCOMING WORSHIP

July 5
“Grounded in Connection”
Exodus 20:1-21

July 12
Outdoor
Worship Service
at Quarry Lakes
(see article, page 3)

July 19
“The Widow at Zarephath”
1 King 17:8-16;
The Rev. Dr.
LaTaunya Bynum,
Guest Preacher

July 26
“Esther & Mordecai”
Esther 4

August 2
“Peter’s Betrayal & Re-entry”
John 18 and 21

To worship with us on Zoom on Sundays, register once at bit.ly/reg4worship.

United in God’s love for everyone’s journey ... no exceptions.

36600 Niles Blvd. ♦ Fremont, CA 94536 ♦ (510) 797-0895 ♦ <http://nilesdiscoverychurch.org>

NEWCOMERS INVITED TO “SOUP WITH THE PASTOR” ON JULY 19



People who are relatively new to the church along with people who are considering becoming members of the church are especially invited to “Soup with the Pastor” on Sunday, July 19, in the fellowship hall following coffee hour. Sandy Thomas is going to cook a soup that will be served sometime between 12:15 p.m. and 12:30 p.m. It is helpful to know how many Sandy should cook for, so please let Pastor Jeff know by July 16 if you plan to attend. Let him know if you need a vegetarian or vegan soup option. A free will offering is received to help cover food expenses (\$5 suggested) from those who can afford it.

ANNOUNCEMENT AND NEWSLETTER SUBMISSIONS

Please send announcements and articles as you write them to the office administrator at admin@nilesdiscoverychurch.org. Your submission will be posted on our [News blog](#) as they are received, and will be used to create announcements (as appropriate), as well as submitted for the next edition of *The Bell* (if appropriate in terms of timing). The deadline for submissions for the August 2026 edition of *The Bell* is 8:00 a.m. on Thursday, July 16. In addition to typical newsletter news, we hope to fill each issue of *The Bell* with reflections, photographs, poems, and so forth by members and friends of the congregation.



CONTACTING THE STAFF

You can call the office 510-797-0895 to leave a message for office staff members. Our Office Administrator, Laurel Wallace can be emailed at admin@nilesdiscoverychurch.org. She is typically in the office on Mondays and Thursdays, 11:00 a.m. to 4:00 p.m. Our bookkeeper, Cecilia Le, can be emailed at cecilia@nilesdiscoverychurch.org. She is typically in the office on Tuesdays, 9:00 a.m. to 2:00 p.m., and also does some work from home. Please use the pastor’s Calendly app to make an appointment for a phone call, a Zoom meeting, or to meet on site (you get to pick); Pastor Jeff’s contact information is to the right.

Absences: Jenny Lin is on vacation through July 19.

Pastor Jeff’s contact info:

Office: 510-797-0895 x2

Mobile: 510-579-8851

Make an appointment:

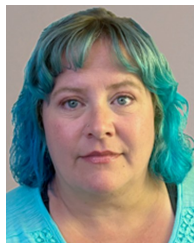
calendly.com/revjss

Email:

jeff@nilesdiscoverychurch.org



Senior Pastor-
Rev. Jeff
Spencer



Admin
Laurel
Wallace



**Technology
Director**
Jim Thomas



Bookkeeper
Cecilia
Le



**Music
Director**
Andrew Kessler



**Accompanist and
Organist**
Jenny Lin

GROUNDED IN CREATION WORSHIP SERIES CONTINUES THROUGH AUGUST 2

By Pastor Jeff

In the first sermon of this series (preached on June 28), we looked at the idea that God created us to be in community with each other, to be connected to each other, to be of support to each other. Called "Grounded in Connection," this series starts with the recognition that relationships are the cornerstone of who we are as people of faith. Our relationships with others are how we learn and grow. They are the primary way we give and receive love and grace.

During this series, are exploring the joys and challenges of human relationship, community, and living with one another. In the midst of complex human relationships, we are reminded yet again that God is here, showing us the way of connection, mercy, and grace. Throughout

the series, we will discover we are created to be grounded in connection to God and to one another.



There are have conversation starters on the tables during Coffee Hour each week, and I'm hoping there will be a couple people to encourage conversations during the fellowship time on Zoom (if you'd like to be one of those people, please let me know).

We will pause the series on July 12 because worship will be at Quarry Lakes Park that day (see article below), and complete the series during the following three weeks.

I hope this is a spiritually rich worship series for all of you.

OUTDOOR WORSHIP SERVICE AND PICNIC TO BE HELD JULY 12

International Day of Hope sets theme for this year's gathering

The congregation will gather for worship and a potluck picnic on Sunday, July 12, at the Quarry Lakes Regional Park (off of Isherwood Way in Fremont) in the Esplanade North picnic shelter. People will be setting up the space starting around 9:00 a.m.; worship begins at 10:00 a.m.; the picnic lunch follows the worship service.

July 12 is the International Day of Hope. Initiated by global mental health leaders and now formally recognized by the

United Nations, the International Day of Hope is a call to action: to make Hope a public health priority, and to recognize it as a protective



factor against violence, addiction, and suicide. The United Nations says, "Hope supports peacebuilding

by fostering trust, encouraging dialogue between groups, and empowering young leaders" (un.org/en/observances/hope-day).

The United Nations goes on: "Ultimately, this day is a reminder that even in difficult times, hope remains a transformative force. It can bridge divides, drive progress, and uplift the human spirit. The International Day of Hope invites all of us to pause, reflect, and recommit to a future built not on despair or division, but on shared humanity and the unwavering belief in a better tomorrow."

Continued, see "WORSHIPPING WITH HOPE" on Page 4

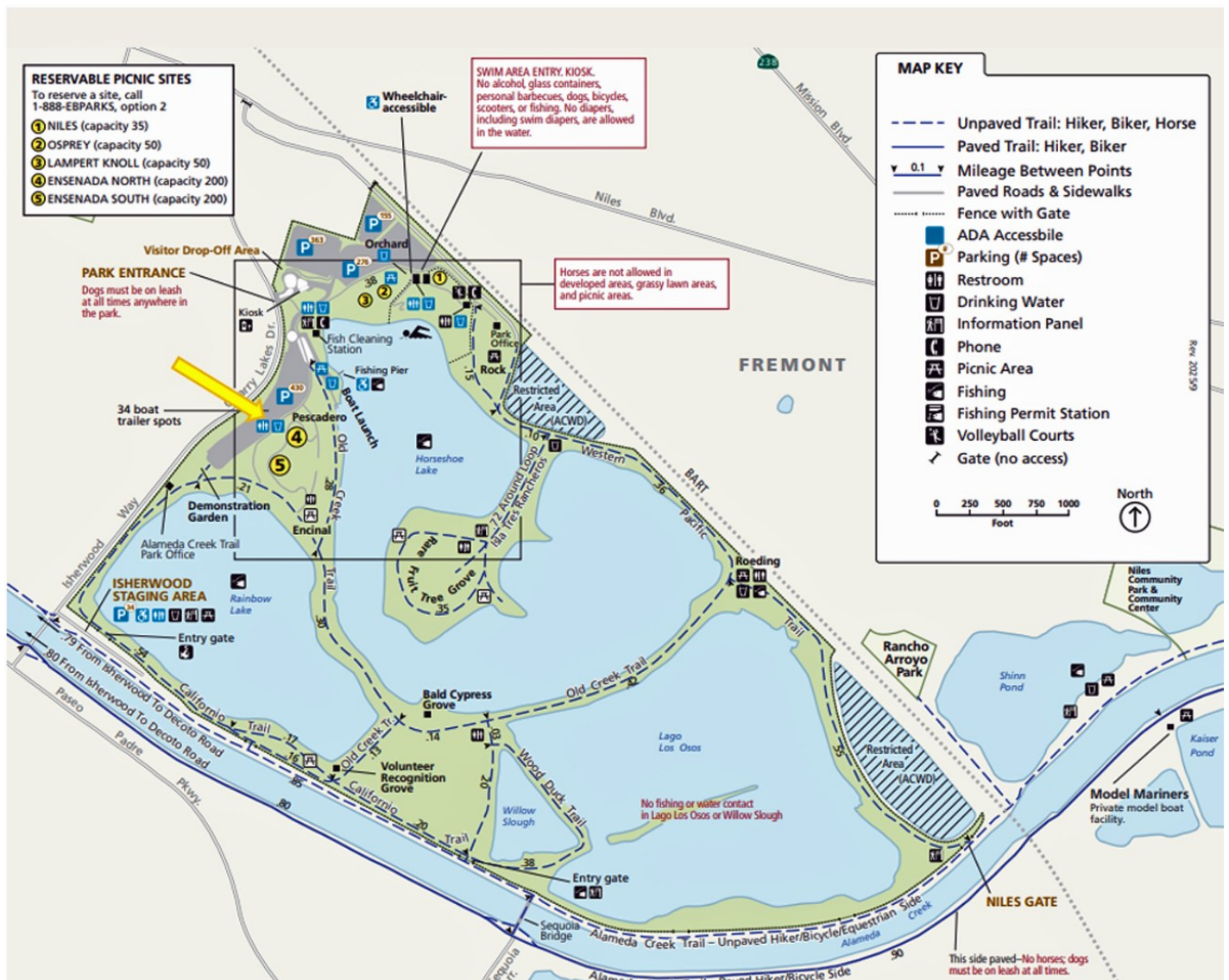
Continued from Page 3

WORSHIPPING WITH HOPE

Pastor Jeff said that “Hope” will be the theme of the worship service that day. “I haven’t picked a focus scripture or scriptures yet,” he said just before the press deadline for this edition of *The Bell*. “I have an idea that will make the service more interactive than usual. We’ll see if that idea solidifies in the coming weeks.”

The picnic that follows the service will be a potluck, with the Ministry of Hospitality & Fellowship Team providing chicken and bottled water. Participants are encouraged to bring a dish representing their cultural heritage or an example of their favorite international cuisine to share as we enjoy fellowship, explore new flavors, and celebrate diversity together. If you want something other than water to drink, you should bring that, too. Some people bring a camping chair, finding that more comfortable than the picnic table benches.

For more information and to sign up with the dish you plan to bring, please contact Julie Ballard by phone at 510-366-3078 or by email at JBallard8858@gmail.com, or talk with her during coffee hour at an upcoming worship service.



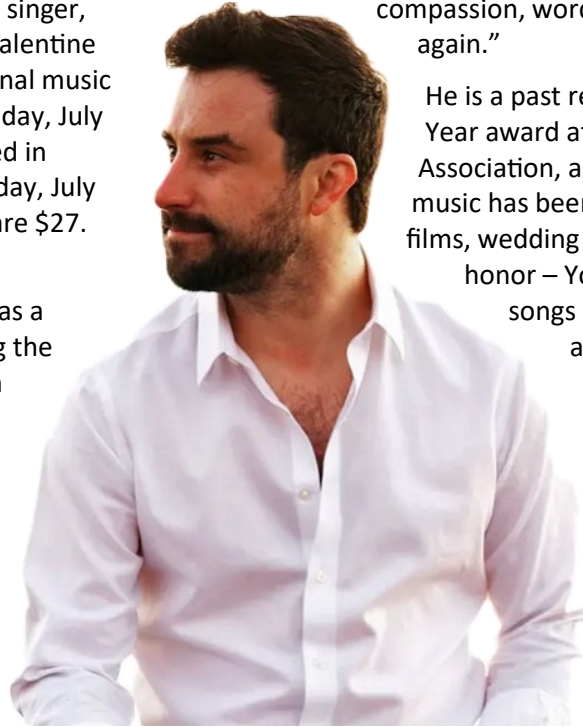
CONCERT TO FEATURE SINGER/SONGWRITER BOBBY JO VALENTINE

By Pastor Jeff

The award-winning, modern folk singer, storyteller, and poet, Bobby Jo Valentine will present a concert of his original music at Niles Discovery Church on Sunday, July 19, at 4:00 p.m. Tickets purchased in advance (by 10:00 a.m. on Saturday, July 18) online at bit.ly/bjvndc2026 are \$27. Tickets at the door will cost \$30.

Bobby Jo Valentine, best known as a singer/songwriter, grew up along the windswept coastline of Northern California in a family that attended a Baptist Church that held “strict lines and sharp edges.” While in many ways it was a nurturing environment, it was very judgmental about issues of sexuality. This created internal conflicts for Bobby Jo as he came to realize he is a gay man. He has emerged from that struggle into a larger, kinder, more welcoming faith ... one that is excited to learn, open to growth, and focused on love.

Now he writes poetic, searching songs that connect deeply with people from all walks of life. His stories are sometimes funny, sometimes moving, and always deeply resonant. Singer/songwriter Dar Williams says, “Bobby Jo has both the spirit and songs to bring us back to believing. Whatever our faith, he has the humor,



compassion, words, and music to help us believe again.”

He is a past recipient of the Songwriter of the Year award at the West Coast Songwriter’s Association, as well as several other awards. His music has been featured in commercials, feature films, wedding ceremonies, and his greatest honor – YouTube videos with puppies. His songs have been sung by choruses around the country, including the San Francisco Gay Men’s Chorus and the Turtle Creek Chorale.

Stephen Schwartz, creator of the musicals *Godspell* and *Wicked*, says Bobby Jo writes “catchy songs with good tunes and intelligent, thoughtful lyrics in the tradition of Bob Dylan, Cat Stevens, and Bruce Hornsby.”

Bobby currently hails from Portland, Oregon, and is ecstatic any time he can discuss the big questions, challenge the easy answers, and inspire people to move closer to love.

A recent audience member told Bobby Jo, “You’re like a mix of John Prine and Mr. Rogers.” Bobby Jo was happy to receive this compliment.

You can get a preview of Bobby Jo Valentine’s music by searching for him on YouTube.

COMMUNITY BULLETIN BOARD



Members and friends of Niles Discovery Church are invited to submit short notices that may be of interest to the rest of the congregation. Note, no commercial notices or partisan political announcements are allowed. Niles Discovery Church makes no representations or endorsements about the events or services listed.

PFLAG FREMONT/TRI-CITIES has started a monthly support group for parents and caregivers of LBGTQ+ kids and family members (of all ages). The group meets on the first Wednesday of the month (so July 1 this month) on Zoom. Contact Pastor Jeff for the Zoom link if you would like to attend.

INTERNATIONAL DENOMINATIONAL MEETING HAPPENING IN OUR CHURCH

By Pastor Jeff

2026 GENERAL ASSEMBLY
BEYOND:
LOVE SURPASSING
EPHESIANS 3:14-21

JULY 10-11, 2026



The Christian Church (Disciples of Christ) is covenantally based. Each congregation lives in covenant with the other congregations and with the wider church. Starting this year, the DOC (as the denomination is typically abbreviated) will hold a general meeting every year in a three-year cycle, two years online and the third year on site. The first event of this new meeting schedule for the General Assembly of DOC congregations in the United States and Canada will be held online on July 10 and 11. Our church is going to be one of three regional gathering places for people who want to attend the General Assembly with other Disciples even though it's an online gathering.

General Assembly will be on Friday, July 10, from noon to 4:15 p.m., and Saturday, July 11, from 8:00 a.m. to 3:00 p.m. To register to attend the General Assembly, go to bit.ly/GA2026reg. Then attend General Assembly from the comfort of your home or in community (at our church) with other Disciples from our general area.

If you would like to help by greeting, welcoming, or feeding Assembly attendees, contact Debbie Keesis. She can give you all the details. Volunteer slots are generally only a couple hours.

INVITE CHILDREN TO *BLUEY* STORYTIME MONTH AT NILES DISCOVERY CHURCH

By Randy Fewel

Invite your friends, neighbors, and that cute little kid in the grocery store to experience Bluey Storytime Month at Niles Discovery Church. This six-week series takes place on six consecutive Saturdays, 10:00 a.m.-11:00 a.m., starting July 11, on the church patio. It's perfect for children ages 3 to 7 (though all are welcome). Children and their parents are welcome for stories, songs, and activities.

Why Bluey? Each book has a helpful message that reflects our Christian values. For instance, *Bluey: The Pool* reflects Christian teachings by using a simple day at the pool to teach about the value of preparation and the virtue of patience.

Bluey: Shadowlands tells a story of playing a game where the characters can only step on shadows. Bluey's friends want to alter the rules to make winning easier. Bluey insists on sticking to the original framework, discovering that the rules are exactly what make the journey meaningful. The message is about integrity and the value of holding fast to moral truths and boundaries, showing that following the right path yields greater spiritual rewards than taking shortcuts.

Registered families will be given a *free* Bluey story book to take home each week – so encourage the people you invite to register! To participate, parents must register for each date they plan to attend at bit.ly/BlueyNDC2026.

Please help by spreading the information. To make that easy, bookmarks with all the information are available on the literature table in the fellowship hall. Pick a few up to hand out. You can also pass this story along via email to the families of children you know.

The Ministry of Christian Education Team and The Ministry of Invitation Team are going all out to make this a fun way to invite young families into the church.



WITH GRATITUDE, TCV CHANGES CHRISTMAS TOY PARTY PLANS

7

By Linda Leu, Executive Director, TCV Food Bank

For many years, Niles Discovery Church has partnered with Tri-City Volunteers (TCV) to create a Christmas Toy Party for the TCV Food Bank families, most recently hosting the event at the church. It has been a tradition we have shared for many years. We are so grateful for the joy that we have been able to spread to Tri-Cities families through the invaluable partnership with Niles Discovery Church.



As the seasoned volunteers from Niles Discovery Church know, putting on a big event is a heavy lift, and in a time when food insecurity is rapidly rising in our community, we feel that we must focus our energies on our core mission of providing food.

To make this work, we will definitely need your help. In order to keep the toy shop open (we are hoping for a duration of one or two weeks), we will need volunteers every day to run the toy shop, including helping clients shop for toys, and if needed, wrapping gifts or watching kiddos when parents shop.

This year TCV plans to try a different format for our toy giveaway. The current plan is to have Santa's Toy Shop at the TCV Food Bank, and if possible, accessible whenever TCV is open for food distribution. We were able to experiment a bit with this last year and families found it very convenient to be able to "shop" for toys when they were already there for food.

We are still very early in our planning process (we just launched Saturday distribution hours) so we will share an update when we get closer to the holiday. In the meantime, please accept our gratitude for your partnership since the beginning of Tri-City Volunteers.

FLEA MARKET TIME IS HERE AGAIN!

By Barbara P. King



On the last Sunday in August each year, downtown Niles hosts an antiques fair. Years ago, the church began participating in a small way, but gradually this event grew into a month-long Flea Market that supports our church's mission and provides an opportunity to interact with our Niles community. So, it's time to go through those closets, cabinets, nooks, and crannies. The sooner you bring in your donations, the better their chance of finding a new home. Your contributions directly support our church and programs, making a real difference in the community.

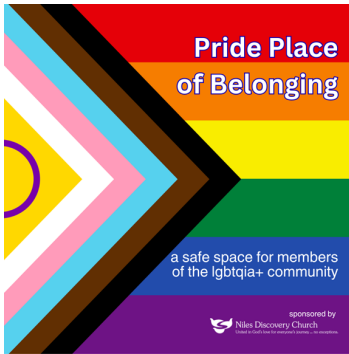
What to donate: small working appliances, kitchen tools, dishes, glassware (not chipped), pots and pans (with coating intact), small moveable furniture, linens with no stains or tears, decorative items, clocks, jewelry, collectibles, art, toys, unused pet supplies, small rugs, purses, hats, accessories, general interest books, holiday decor, lamps, bikes, scooters, working electronics, tv's and radios with their cords attached, and so on.

Items we cannot accept: baby furniture, kitchen knives, upholstered furniture, old microwaves, heavy sports equipment, clothing or shoes, broken objects, curtain rods, broken tools, textbooks, dictionaries, encyclopedias or manuals, plumbing fixtures, construction items, lighting fixtures, Sofas, mattresses/bed pillows, random cords or TV parts.

When to Donate: This year, we will begin collecting treasures for the flea market on Sunday, July 26. And the last day to donate is Wednesday, August 26. We accept donations at these times:

- Before and after Sunday worship services
- Weekdays between 10:00 a.m. and 2:00 p.m.
- Saturdays between 10:00 a.m. and 1:00 p.m. (new this year!)
- If you need another time, call Alta Jo Adamson at 510-56-4541 or Barbara P. King at 386-589-4105, and they will open the church for you.

Volunteering: Church members are invited to sign up to help unpack, sort, clean, price, display, restock, and sell all the wonderful and wild stuff we get. An online volunteer sign-up page will be active by Monday, July 13; watch the "This Week" email for the link.. This year, we are changing how volunteers process donations to streamline the experience. Please consider helping in any way you can, and for any amount of time that you are available. We truly appreciate the support of our volunteers and hope you feel proud to be part of this shared effort.



ABOUT PRIDE PLACE OF BELONGING

Pride Place of Belonging was formed at Niles Discovery Church to support the LGBTQIA+ community, recognizing that there was no other location designated for the Queer Community in Fremont. Niles Discovery Church has been an Open and Affirming Congregation for over 30 years. We decided we are capable of creating a safe, supportive, and fun place for queer people to gather on a monthly basis.

VOLUNTEERS SOUGHT FOR BOBBY JO VALENTINE JULY 19

Bobby Jo Valentine will present his original music in a concert on Sunday, July 19, at 4:00 p.m., in the Niles Discovery Church sanctuary (see article on page 5). The event is sponsored by Pride Place of Belonging, a ministry of the church. A handful of volunteers are needed to help out; if you would be willing to work the box office, the merch table, or the intermission/reception, please let Pastor Jeff know (by email is best) as soon as possible.

Tickets to the concert are available online for \$27 at bit.ly/bjvndc2026 – if purchased by 10:00 a.m., Saturday July 18. Tickets at the door will cost \$30. This is a great event to share with your unchurched friends and with people you know who appreciate good music.



PRIDE PLACE OF BELONGING SCHEDULE CHANGES



There will be no monthly Pride Place of Belonging Support Group this month. Everyone is encouraged to attend the Bobby Jo Valentine Concert on the third Sunday of the month.

The Pride Place of Belonging support group for the LGBTQIA+ community will resume in August on the *third* Sunday of the month, from 4:00 p.m. to 5:00 p.m., at the church in room 3.

Also resuming in August, on the *fourth* Sunday of the month, from 4:00 p.m. to 6:00 p.m., are monthly social activities for the LGBTQIA+ community and their families, friends, and allies.

Watch this space for details about each month's social activity is.

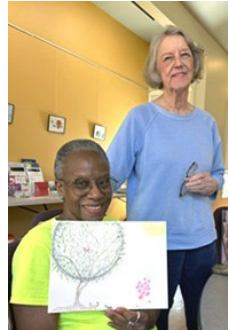
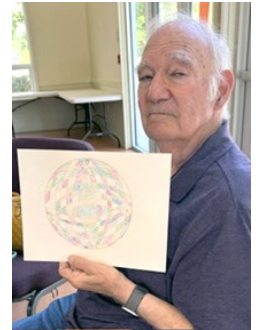
IMMIGRANT LEGAL RESOURCE CENTER'S RED CARDS



If you know of anyone (perhaps someone you pay as a gardener or housekeeper) who is concerned about ICE, please pick a red card for them from the literature table in the fellowship hall. These red cards are intended to provide information to all people in the U.S. – regardless of immigration status – on their rights and protections under the U.S. Constitution.

A JOURNEY IN IMAGINATION

On May 31, Karen Haughey held a workshop titled “A Journey in Imagination” at the church. Here are some photos of the art created by some of the participants.



CHURCH'S GIFT CARDS - LIQUIDATION

By Barbara P. King



Here's an opportunity to help our kids get a playground.

Sales of our gift cards have supported kids' camp registration fees for years, but they have declined significantly since Christmas. There have been no requests for Camp reimbursement in 5 years, so we are discontinuing this fundraising program. At present, this checking account has over \$7,500.00 sitting, unused. We will allow an appropriate amount to remain in the campership fund for any future requests, with the balance going toward playground equipment.

The members of the Ministry of Christian Education Team and church leadership feel earnings from gift card sales should go to a project that would benefit our children and help our community recognize us as a child-friendly congregation. We hope adding a playground will help us accomplish this.

We will be selling the remaining 44 gift cards totaling \$2,335 during Fellowship Time, beginning immediately.

Below is a list of the cards we have on hand:

5 -\$10 Burger King	2- \$25 McDonalds
1-\$25 Claim Jumper (Locations in Southern California)	4-\$100 Safeway
2- \$25 Honey Baked Ham	3-\$50 Smart & Final
1- \$25 H&M	9-\$100 Target
1-\$10 Jack in the Box	2-\$25 Visa
1- \$100 Lowes	1-\$100 Walmart
4-\$25 Macy's	1-\$100 Walgreens cards

Stop by during fellowship time or contact Barbara P. King to help with this project, purchase some cards, or donate to our playground construction.

JULY SPECIAL OFFERING: SCHOOL SUPPLIES

The Ministry of Christian Education Team reminds you that during the month of July, we are receiving donations of backpacks, school supplies, and/or cash.

A list of school supplies and items needed is available on the table in the Fellowship Hall, on the bulletin board by the Room 4 door, or by emailing MCE@nilesdiscoverychurch.org to request a copy. We will begin collecting your donations on June 29 and dedicate the donations on July 26.



The filled backpacks will be donated to the Fremont Resource Center for distribution to children in our area prior to the start of school in August.

As with all our special offerings, you are welcome to give at any time. To donate, go to nilesdiscoverychurch.org/give and choose "School Supplies" in the "Select Option" frame; or mail a check to the church. With so many possibilities for special giving, you may need to choose which ones are most important to you. To see the complete schedule of special offerings, please visit bit.ly/NDCSpecialOfferings.

Many thanks to all that participated in our June Special Offering for Pentecost/Strengthen the Church. By the press deadline we had collected \$135.

FELLOWSHIP NEWS



REGISTRATION REQUIRED

To enhance the safety of your Zoom experience, we typically require advance registration for Zoom meetings held on the church's Zoom account. You only need to register once for a repeating event. Find the registration links in the descriptions of the scheduled events.



MONDAY AFTERNOON BIBLE STUDY

Monday Afternoon Bible Study continues to Zoom from 4:00 p.m. to 5:00 p.m. The scripture studied is typically the scripture for the coming Sunday's worship service. Everyone is welcome. You can register to join the Zoom meeting at bit.ly/MABSreg.



SUNDAY LUNCH BUNCH

Join a small group that is in the habit of going to a restaurant for lunch with Pastor Jeff after coffee hour on most Sundays. This "Lunch Bunch" has a rotation of restaurants to eat at, and head off to that Sunday's restaurant at 12:30 p.m. If you would like to join the Lunch Bunch on a particular Sunday, let Val Parker know by 12:10 p.m. that day so she has a headcount to bring to the restaurant. Look at the church calendar (the second to last page of *The Bell*) to see which restaurants the Lunch Bunch is going to.



LAP ROBE TYING GROUP No meeting in July or August

The lap robe group will not meet in July or August. We will resume meeting in September on the 4th Wednesday thereafter. However, we are also on hiatus during November and December. Any questions or suggestions of who would like a lap robe can be directed to Judy Molander, 925-201-7335 or jumolander@aol.com.



GREEN TEAM MEETING July 1

You're welcome to join the Green Team, a group leading our congregation's efforts to address the climate crisis. They typically meet the first Wednesday of the month, from 1:30 p.m. to 2:30 p.m., on Zoom. For questions, contact Susie Claxton (veroclax@sbcglobal.net) or Bee Newell (beenewell2@gmail.com). Here is the link to the Zoom meeting bit.ly/greenteam25.



PUZZLE EXCHANGE AND SCRIP SALES See article on page 10 about the Scrip Liquidation

You're welcome to drop by the fellowship hall each Friday, from 1:00 p.m. to 2:00 p.m., to exchange a jigsaw puzzle and/or buy some scrip. Some people stick around to work on a puzzle, just for the fun of it.



THE OUTING GROUP

You are welcome to join the Outing Group. We are a group of people that enjoy visiting places and doing things. We go to local museums, gardens, parks, and places of interest. We also enjoy going out to eat during our wanderings. If you would like to join us, please contact Katy Wharton at thewhart@comcast.net.

**PRAYERS FOR THESE PEOPLE (AND THEIR FAMILIES AND FRIENDS)
BECAUSE OF THEIR HEALTH CONCERNS:**



Pastor Emerita Sally Smith;
Keith Moody;
Mary Vonah-Gregory;
George Roeding;
Diana Roeding;
Bruce Roeding;
Barbara J. King;
Carl Nordling;
Linda Boling;
Glennnda Chui;
Wayne Fralin;
Marty Williams;
Margo Roletto;
Karen Haughey;
Barbara Swint;
Maria Sicalbo;
John Zlatnik;
Judy Zlatnik;
Ginny August;
Helen Boyer;
Hermann Attinger;

Luke Boyer;
Diane Kindle;
Diana and George Roeding's son-in-law, **Mike Mendenhall**;
Margo and Jim Roletto's cousins, **Ted and Femmy Stannard, and John and Marian Heidel**;
Chris Keesis' mother, **Suzanne**;
Jim Peck's cousin, **Sally Cario**;
The daughter of Brigitte Nichols (who is a friend of the Boyer/Taylor clan);
Cecilia Le's spouse, **Linda Carpenter**;
Ann Finlinson's husband, **John Cant**;
Riki and Mark Twist's daughter, **Shelly**;
Liz Musgrave's friend, **Stephanie Roden**;
Peter Wilson's dad;
Jasmine Zartman's mother, **Karen Trepte**;
Shaun Moeller's brother, **Dave Nyman**;
Diane Harvey's sister, **Linda**;

Priscilla Taylor's friend, **Paul Folkestad**;
Priscilla Taylor's friend, **Jayne Gallagher**;
Priscilla Taylor's cousin-in-law, **Michele Arcelo**;
Priscilla Taylor's friend, **Michelle Campbell**;
Priscilla Taylor's father-in-law and mother-in-law, **Steve and Angie Taylor**;
Rich Gallegos' mother, **Esther**;
Helen Boyer's sister-in-law, **Marjorie Boyer**;
Michael Thomson's sister, **Mary Thomson**;
Katy Wharton's mother;
Katy Wharton's sister-in-law, **Hedi**.

THE SPOUSES, PARTNERS, CHILDREN, PARENTS, AND EXTENDED FAMILY MEMBERS WHO ARE CARING FOR AND/OR JOURNEYING WITH SICK, FRAIL, AND/OR ELDERLY LOVED ONES (ESPECIALLY FOR THOSE NAMED ABOVE).

THE PARENTS, CHILDREN, AND EXTENDED FAMILY MEMBERS WHO WISH THEY COULD BE DOING MORE TO SUPPORT THEIR SICK, FRAIL, AND/OR ELDERLY LOVED ONES, BUT FOR WHOM DISTANCE AND/OR OTHER FACTORS MAKES THAT DIFFICULT.

PRAYERS FOR ALL WHO ARE GRIEVING, ESPECIALLY:

Iris Nicholson and her extended family as they grieve the death of her brother, David, on May 22; March 2;
Bee Newell as she and her extended family grieve the death of her younger brother, Bill Bolton, on March 21; **Laurel Wallace and her family** as they grieve the death of Laurels mother on December 22;
The extended family of Bill Parks as they grieve his death on **Sharon Gach and her family** as they grieve the death of her husband Bruce on November 29.

PEOPLE WHO ARE FEELING OVERWHELMED BY MULTIPLE PROBLEMS IN THEIR LIVES AND/OR PROBLEMS IN THE WORLD, ESPECIALLY: CINDY SOJOURNER'S FRIEND, SAEMI.

PEOPLE (AND ALL OF CREATION) AROUND THE GLOBE SUFFERING FROM HUMAN-MADE DISASTERS AND FROM NATURAL DISASTERS (OFTEN MADE WORSE BY HUMAN ACTION AND INACTION ON THE CLIMATE CRISIS).

PEOPLE WHO ARE UNEMPLOYED AND UNDER-EMPLOYED, THAT THEY FIND EMPLOYMENT THAT FULFILLS THEIR HEARTS AND SOULS. (PETER WILSON HAS ASKED FOR PRAYER ABOUT THIS.)

THOSE WHO ARE SEEKING RENEWAL, REBIRTH, OR A NEW START.

THANKSGIVING FOR ALL THE WAYS GOD BRINGS HEALING.

PEACE THROUGHOUT THE EARTH, OFFERING THANKS FOR ALL WHO THROUGH NON-VIOLENT METHODS ARE BRINGING GOD'S COMPASSION AND JUSTICE TO THE WORLD.

A reminder about this prayer list:

If you have a prayer request that you'd like added to this list (or removed) please let Pastor Jeff know.

July 2026

Sunday	Monday	Tuesday	Wednesday	Thursday	Friday	Saturday
28	29	30	1	2	3	4
<p>Jenny on vacation</p> <p>Safe Parking</p> <ul style="list-style-type: none"> 9:15AM Choir Warm-up 10:00AM Worship 12:15PM Lunch Bunch - Carmelita's 	<ul style="list-style-type: none"> 4:00PM Bible Study 	<ul style="list-style-type: none"> 1:30PM Green Team meeting 6:00PM Indivisible Fremont - IFCA General meeting 	<ul style="list-style-type: none"> 7:30PM Pride Team organizing meeting 	<ul style="list-style-type: none"> 1:00PM Puzzle Exchange and Scrip Sales 2:00PM Facilities Cleaning 	<p>4th of July - office closed</p>	
5	6	7	8	9	10	11
<p>Jenny on vacation</p> <ul style="list-style-type: none"> 9:15AM Choir Warm-up 10:00AM Worship 12:15PM Lunch Bunch - Classic Diner 5:00PM BSA Troop 112 PLC Meeting 	<ul style="list-style-type: none"> 4:00PM Bible Study 7:30PM Ministry Team Meetings 	<ul style="list-style-type: none"> 9:30AM Ministry of Christian Education Team meeting 7:00PM BSA Troop 112 Committee Meeting 		<ul style="list-style-type: none"> 12:00PM Regional Gathering for General Assembly 1:00PM Puzzle Exchange and Scrip Sales 6:00PM Facilities Cleaning 	<ul style="list-style-type: none"> 8:00AM Regional Gathering for General Assembly 10:00AM Bluey Storytime Month 	
12	13	14	15	16	17	18
<p>Jenny on vacation</p> <ul style="list-style-type: none"> 9:15AM Choir Warm-up 10:00AM Worship in the Park and Potluck Picnic 	<ul style="list-style-type: none"> 1:00PM Cabinet Leaders meeting 4:00PM Bible Study 7:00PM Finance Committee 	<ul style="list-style-type: none"> 9:30AM Bridge Interest Group 7:00PM BSA Troop 112 Meeting 	<ul style="list-style-type: none"> 8:00AM Bell Deadline 	<ul style="list-style-type: none"> 1:00PM Puzzle Exchange and Scrip Sales 2:00PM Facilities Cleaning 	<ul style="list-style-type: none"> 10:00AM Bluey Storytime Month 	
19	20	21	22	23	24	25
<p>Jenny on vacation</p> <ul style="list-style-type: none"> 9:15AM Choir Warm-up 10:00AM Worship 12:15PM Soup with the Pastor 4:00PM Bobby Jo Valentine Concert 	<ul style="list-style-type: none"> 4:00PM Bible Study 7:15PM Cabinet 	<ul style="list-style-type: none"> 9:30AM Serra Center Mandated Reporter Training 	<ul style="list-style-type: none"> 7:30PM Care Team meeting 		<ul style="list-style-type: none"> 1:00PM Puzzle Exchange and Scrip Sales 2:00PM Facilities Cleaning 	<ul style="list-style-type: none"> Flea Market s...ellowship Hall 10:00AM Bluey Storytime Month
26	27	28	29	30	31	1
<p>Flea Market set-up in Fellowship Hall</p> <ul style="list-style-type: none"> 9:15AM Choir Warm-up 10:00AM Worship 12:15PM Lunch Bunch - Carmelita's 	<ul style="list-style-type: none"> 10:00AM Flea Market Sorting in Room 3 4:00PM Bible Study 	<ul style="list-style-type: none"> 12:30PM Flea Market Sorting in Room 3 7:00PM BSA Troop 112 Meeting 7:30PM Book Group 	<ul style="list-style-type: none"> 10:00AM Flea Market Sorting in Room 3 	<ul style="list-style-type: none"> 10:00AM Flea Market Sorting in Room 3 2:00PM Facilities Cleaning 	<ul style="list-style-type: none"> 10:00AM Bluey Storytime Month 	



Niles Discovery Church

Rev. Jeffrey Spencer,
Senior Pastor
36600 Niles Blvd.,
Fremont 94536

Phone: 510-797-0895
nilesdiscoverychurch.org



Niles Discovery
Church



a just
world
for all
ucc.org

THE BELL IS FIRST CLASS

This edition of *The Bell* was graciously edited by Priscilla Taylor. If you received this issue of *The Bell* through the US Mail, then you received it first class mail. You can help reduce our costs (roughly \$2.00 per issue you receive in the mail) by receiving *The Bell* via email. Simply go to BIT.LY/NDCEMAILSIGNUP and start filling out the forms. You can select what email lists you want to join – for the newsletter, the weekly prayer requests, the weekly announcements, and more. Then, please leave a phone message or email the church office (510-797-0895; admin@nilesdiscoverychurch.org) so we can note in our database that you don't need *The Bell* via the US Mail any more.

